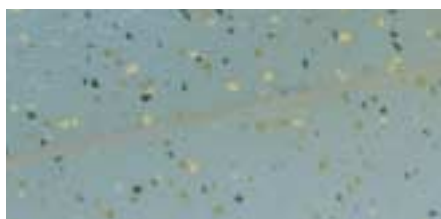


RUBBERWELD HEAT WELDING SYSTEM



The heat welding process allows seams to be hermetically sealed to create perfectly hygienic surfaces ideal for sterile and sanitary areas such as operating rooms and laboratories. Acoustical flooring requires this heat welding procedure.

	CODES	GEODE	PUNTI	FUTURA	TONO	UNITO	ALBA	MURALE
	199-27	GD 219		FT 445				
	199-45		P 10	FT 423			C 31	MU 3363
	198-21			FT 426				
	199-44	GD 220					C 39	
	199-89		P 70				C 38	MU 3367
	199-90			FT 527	TO 711	U 3328		
	199-04		P 65		TO 722	U 3325		
	198-25			FT 463				
	199-22			FT 528				
	199-25				TO 724	U 3391		
	199-54		P 23					
	199-58	GD 211		FT 432				
	199-55	GD 215					C 37	MU 3369
	198-14		P 61					
	199-41						C 16	MU 3370
	199-31	GD 217						MU 3373
	199-56		P 37					
	199-87				TO 716	U 3332		
	199-43		P 14	FT 450				
	199-84				TO 718	U 3331		
	199-92				TO 714	U 3324		
	199-74	GD 213						
	198-13		P 59				C 40	MU 3364
	198-34							MU 3365
	199-99		P 66	FT 523	TO 715	U 3322		
	199-16	GD 212	P 18				C 41	
	199-98				TO 713	U 3326		
	199-53		P 64	FT 526	TO 712	U 3327		
	199-59		P 63	FT 525				
	199-85	GD 205	P 69					
	199-08		P 67	FT 415				
	199-28			FT 419				
	199-86				TO 720	U 3323		
	199-20	GD 206					C 14	MU 3389
	199-82	GD 210	P 13	FT 431				
	199-06			FT 422				
	198-35						C 15	MU 3366
	199-50	GD 207-208	P 15					
	198-30							MU 2916
	199-09	GD 204	P 35	FT 420			C 32	MU 3372
	199-42	GD 202						
	199-34	GD 203	P 34					
	199-29			FT 416	TO 717	U 2912	C 12	MU 3371
	199-57		P 33				C 11	
	199-80	GD 201						
	199-91			FT 524	TO 719	U 3329		
	199-10			FT 417	TO 721	U 2914		
	199-88		P 51	FT 442				