

SPORTFLEX INDOOR & OUTDOOR TRAINING & MULTIPURPOSE AREAS

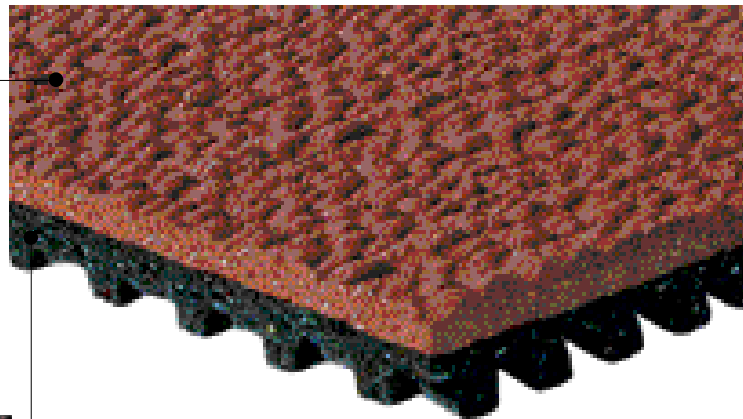


SPORTFLEX SUPER X TRAINING

MOLDED AND VULCANIZED TOP LAYER

Vulcanizing natural rubber makes a strong material even stronger. Mondo's vulcanized track surface provides maximum elasticity and unparalleled durability.

Surface deterioration is minimal throughout the long life of the track.

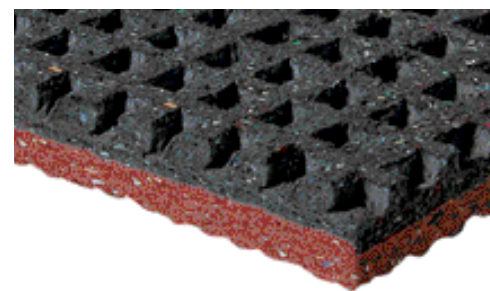


GEOMETRICALLY MOLDED AND VULCANIZED BOTTOM LAYER

New formulation of the bottom layer engineered to improve impact absorption and increases the athlete's contact time on the surface.

Gives the most consistent feel and greatest potential for deformation. Its advanced compartmentalized design deforms for maximum energy absorption.

These advanced deforming geometries are only possible with factory manufactured molded materials. They cannot be poured on site.



SPORTFLEX

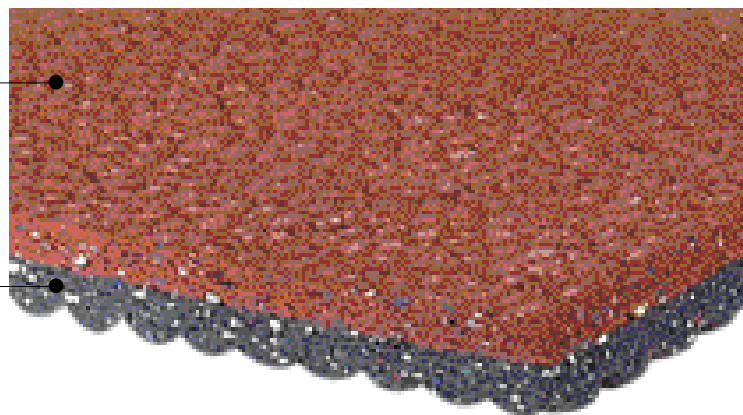
Multipurpose surface for indoor and outdoor areas

MOLDED AND VULCANIZED TOP LAYER

Designed for multipurpose, tennis, all sports and jogging or running tracks where no spike shoes are worn.

MOLDED AND VULCANIZED BOTTOM LAYER

Provides proper shock absorption, optimal energy return and total comfort.

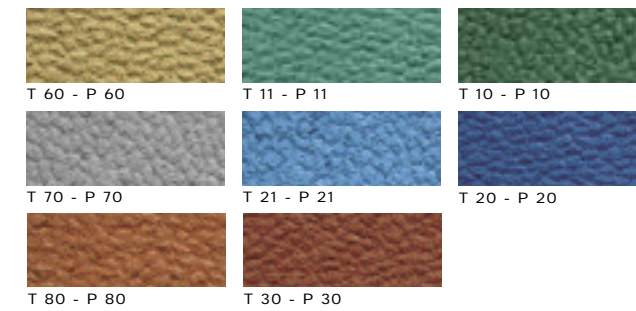


These advanced deforming geometries are only possible with factory manufactured molded materials. They cannot be poured on site.

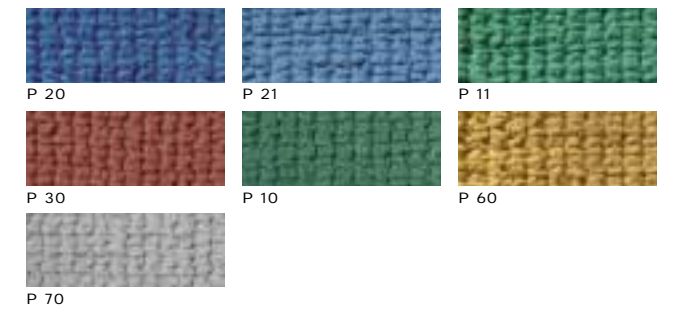
TECHNICAL DATA

ISSUED FOLLOWING THE UNI EN 14877 STANDARD

SPORTFLEX

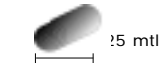
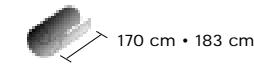


SPORTFLEX SUPER X TRAINING



Sportflex

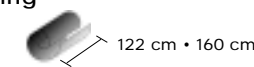
4,5 mm • 5 mm
6 mm • 8 mm



4,5 mm: 5,2 kg/m² 5 mm: 5,8 kg/m²
6 mm: 6,5 kg/m² 8 mm: 8,7 kg/m²

Sportflex Super X Training

13 mm



11 kg/m²

SAFETY IN USE PROPERTIES	TEST METHODS	UNIT OF MEASURE	REQUIREMENTS	AVERAGE VALUES RESULTING FROM PRODUCTION CONTROLS				
				Tennis 5 mm	Impronta Foca 4,5 mm	Impronta Foca 6 mm	Impronta Foca 8 mm	Sportflex Super x Training 13 mm
Slip resistance	UNI EN 13036-4	-	55 ÷ 110	100 (dry) > 55 (wet)	100 (dry) > 55 (wet)	100 (dry) > 55 (wet)	100 (dry) > 55 (wet)	100 (dry) 56 (wet)
Shock absorption	UNI EN 14808	%	35 ÷ 50	-	-	-	-	39
Vertical deformation	UNI EN 14809	mm	≤ 3	-	-	-	-	2,2
Vertical ball behaviour	UNI EN 12235	%	≥ 80	≥ 95	≥ 95	≥ 95	≥ 95	-

TECHNICAL PROPERTIES	TEST METHODS	UNIT OF MEASURE	REQUIREMENTS	AVERAGE VALUES RESULTING FROM PRODUCTION CONTROLS				
				Tennis 5 mm	Impronta Foca 4,5 mm	Impronta Foca 6 mm	Impronta Foca 8 mm	Sportflex Super x Training 13 mm
Thickness	UNI EN 1969	mm	-	5	4,5	6	8	13
Water permeability	UNI EN 12616	mm/h	-	-	-	-	-	impermeable
Resistance to artificial weathering	UNI EN 14836	-	manifold	-	-	-	-	in conformity
Resistance to wear	UNI EN ISO 5470-1	mg	≤ 4000	1200	1200	1200	1200	1500
Tensile strength (T _R)	UNI EN 12330	MPa	≥ 0,4	0,9	0,9	0,9	1	0,6
Elongation to rupture (E _b)	UNI EN 12330	%	≥ 40	180	180	190	200	170
Spike resistance	prEN 14810	%	ΔT _R ≤ 20 ΔT _b ≤ 20	-	-	-	-	in conformity in conformity

OPTIONAL PROPERTIES	TEST METHODS	UNIT OF MEASURE	REQUIREMENTS	AVERAGE VALUES RESULTING FROM PRODUCTION CONTROLS				
				Tennis 5 mm	Impronta Foca 4,5 mm	Impronta Foca 6 mm	Impronta Foca 8 mm	Sportflex Super x Training 13 mm
Reaction to fire	UNI 8457 UNI 9174	class	CLASS 2	CLASS 1	-	CLASS 1	CLASS 1	-
Hardness	ISO 7619	Shore A	-	55	55	55	55	52
Abrasion resistance	ISO 4649 method A 5 N load	mm ³	-	180	180	180	180	220

Mondo keeps the right to modify the characteristics of the products in any moment.