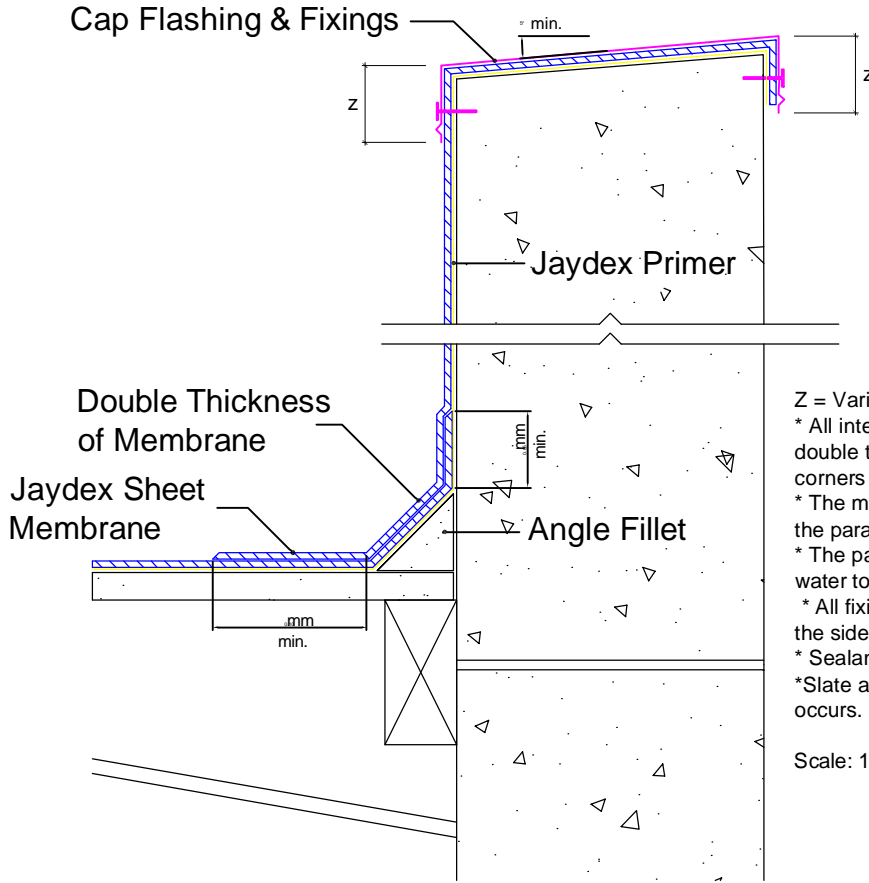
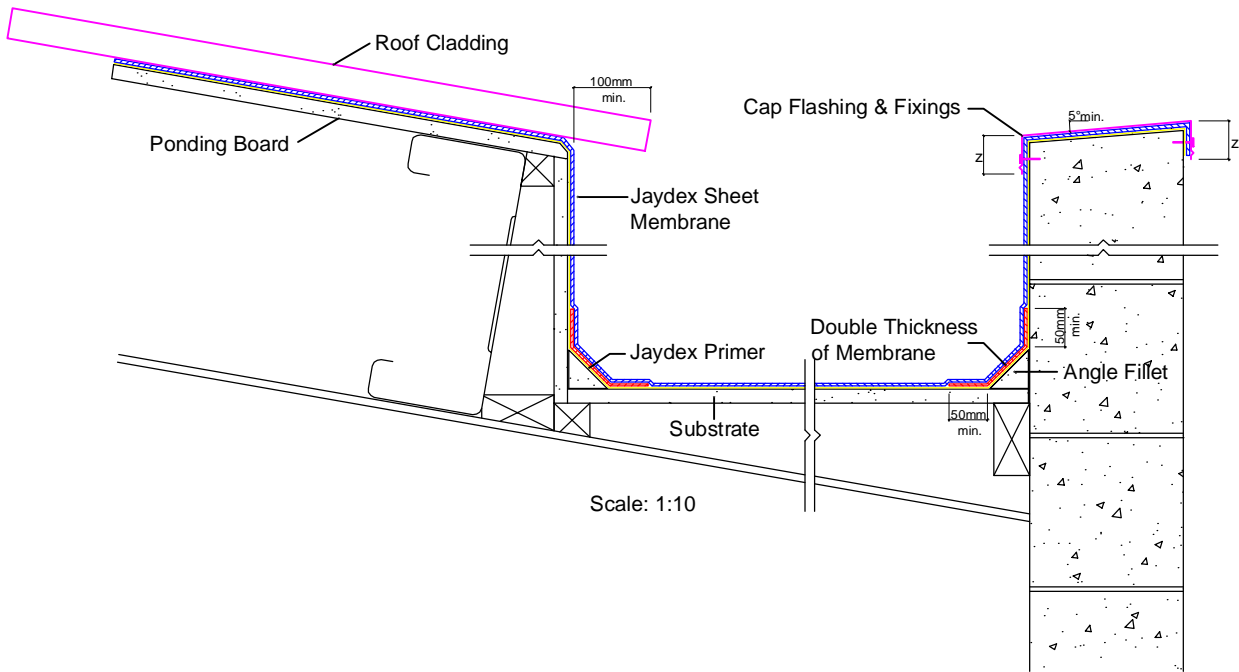


Cap Flashing & Fixings



- Z = Variable according to wind zoning.
- * All internal corners must have angle fillet and a double thickness of membrane, all external corners must be bevelled.
- * The membrane must extend across the top of the parapet and down the outside of the parapet.
- * The parapet substrate, must be angled to allow water to run off the top of the parapet.
- * All fixings for the cap flashing, must be through the side of the flashing.
- * Sealants used for fixings, must be compatible.
- * Slate aggregate must be removed where overlap occurs.

Scale: 1:5



Scale: 1:10

ROOF

GUTTER ADJACENT METAL ROOF

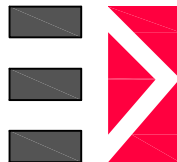
Single Sheet Torch-On Membrane System

Mineral Chipped Surface Finish

RF/13/SS/MC

Date: 06/06 Drawn: SB

JAYDEX
INTERNATIONAL · LIMITED



UNIT 3c-3 MARKEN PLACE,
GLENFIELD, AUCKLAND

PHONE Bus. (09) 444-1751
FAX (09) 444-0132

P.O Box 100 000
NORTHSHORE MAIL CENTRE

E-MAIL jaydex@xtra.co.nz
sales@jaydex.com

Disclaimer

The detailed drawings as outlined are based on our experience and application procedures and represent the latest information available. No responsibility is taken for uses to which this information may be put, but we advise that where the application is in complete conformity with the appropriate specification a warranty maybe available.

We reserve the right to alter or up date the information parameter at anytime without prior notice.