

SPECIFICATION

JAYDEX SHEET MEMBRANE SYSTEM WITH AN ASPHALTIC OVERLAY ON A CONCRETE VEHICLE DECK

INTRODUCTION

This specification includes the preparation for and installation of the **Jaydex Novabond** single layer system (ISO9001 rated) to a concrete screed deck surface. The total system is composed of a 4mm ultra reinforced spun bonded polyester torch on membrane applied first and then overlaid with a compacted asphalt screed. This compacted asphaltic wearing course in combination with a tightly sandwiched ultra strong membrane provides a problem free vehicle storage / movement deck area over the long term. **Jaydex only supply Atatic Polypropylene high strength spun bonded polyester reinforced membranes.**

SUBSTRATE PREPARATION

Concrete Screed Surface

Shall be finished to NZS3114:1980 U2. Wood or bull float manually only to create an even surface finish. Fillets 50mm x 50mm shall be installed at all vertical and horizontal junctions. Concrete falls to be 1:40 minimum to ensure adequate runoff from the finished surface. In the event the concrete support slab for the concrete screed includes Dycore channels, these must be drilled into from below to release any water residue that may be present.

The concrete screed must be correctly engineered to meet the NZ Standards for concrete screed quality and emplacement. It must be cured for the prescribed minimum period, but in any event the RH of the screed invert must not exceed 75% prior to the membrane application. Excess water in the screed may cause upward vapour pressure on the membrane resulting in bubbling of the installed membrane, during its application or post application with the asphalt topping.

In the event one or more of the above conditions are not met, Jaydex must be fully consulted by the Main Contractor well before any membrane application commences.

APPLICATION OF MEMBRANE SYSTEM

Primer

One coat of Bitumen Primer is applied at a spreading rate of 6 – 8 sqm / litre, by brush or roller and allowed to dry.

Membrane to Deck

All internal and external corners and vertical to horizontal transitions shall have plain sheet membrane gusset patches and strips applied before the main membrane application.

Torch down the **Jaydex Novabond** Spun bonded polyester reinforced membrane over the total preprimed areas. Torch seal separately all end and side joints to ensure correct permanent closure of all laps.

Membrane to Gutters

Where gutters form part of the deck area the **Jaydex Novabond** membrane is torch applied to the gutter prior to the laying of the main area.

Asphalt Overlay

Prior to the laying of asphalt the applied membrane must be carefully inspected to ensure there is no mechanical damage and/or isolated moisture related blisters. Rectify any of those issues before the asphalt application commences.

A tack coat of Hot Mix primer is applied to the whole membrane area followed by No.10 Hot Mix. The Hot Mix is screeded out and rolled to a minimum compacted thickness of 50mm. The rolling out procedure is conducted at right angles to the longitudinal lap joints of the already applied membrane sheets. The rolling out procedure should be conducted either in the cooler early morning or late afternoon periods.

DRAINAGE AND OUTLETS

Jaydex outlets of various configurations are available to drain water from Jaydex membrane roof, deck, and gutter areas. Each Jaydex outlet reliably interfaces with all Jaydex waterproofing systems.

MAINTENANCE

- The Jaydex Membrane Roof/Deck system must be regularly checked for damage. Any damage, detected must be correctly repaired and where applicable a recoat carried out over the membrane. All rubbish / debris left lying on the membrane surface must be removed.
- Jaydex side and dropper drainage units must be regularly checked with removal of any accumulated rubbish at the inlets. All inlets should have Jaydex proprietary grates installed in them.

WARRANTY

When Jaydex Licensed Contractors apply this membrane system in accordance with this specification a standard warranty will be issued for up to twenty (20) years.

The information contained in this Specification is based on our experience and testing, and represents the latest information available at the date of production. No responsibility is taken for uses to which this information may be put, but we advise that where application of products and processes is in complete conformity with this specification, an appropriate warranty may be available. We reserve the right to update information parameters and formulations at any time without prior notice.



MELROSE STREET CARPARK - NEWMARKET

NOVABOND Plastomeric Modified Bitumen Waterproofing Membrane

Product description

Novabond is a high-performance, proven effective plastomeric modified bitumen waterproofing membrane (APP) for use on concrete vehicle decks and bridge decks.

Novabond is a single layer sheet membrane system, where an ultra-reinforced spun bonded polyester torch on membrane (either 4mm or 5mm) is first applied to a concrete screed deck surface, and then overlaid with a compacted asphalt screed. The compacted asphaltic wearing course in combination with a tightly sandwiched ultra-strong membrane delivers a highly robust, problem-free vehicle deck / bridge deck with unparalleled longevity.



Key product benefits

- **Superior strength:** Novabond delivers exceptional dimensional stability and superior strength which makes it ideally suited to high vehicle traffic applications
- **100% waterproof guaranteed:** Torch-on sheet membrane that, once the lap is sealed, is completely impervious to water, Novabond is guaranteed 100% waterproof
- **Extreme longevity:** Outstanding durability with 50 years' service life
- **Convenient and cost-effective:** An easy to apply*, single layer waterproofing solution in ready-to-use 10m rolls
- **Proven effective:** Novabond has over 20 years' of proven performance in New Zealand

*Novabond is a torch-on solution that must be applied by a Jaydex Licensed Contractor

Ideal applications

- Car parking buildings
- Mall vehicle decks
- Office complexes
- Commercial spaces
- Vehicle dealerships
- Hotels

20 years' proven performance on New Zealand vehicle decks

Novabond has a faultless track record for the waterproofing of vehicle decks / bridge decks in New Zealand for over 20 years.

Novabond has been used on a number of high profile projects including the Sheraton Hotel, several Pak 'N' Save Supermarkets, and North Shore Hyundai.

You can rest assured that Novabond will be doing its job flawlessly for its full 50 year expected lifespan and beyond.



Specialist torch-on application for vehicle decks

The excellent thermoplastic properties of the waterproofing compound allow the application of Novabond with a specialist torch-on system or hot-air generator. The application of the membrane should ideally be carried out in good weather conditions and after the concrete substrate has been adequately cleaned and prepared.

PLEASE NOTE: Novabond must be installed by a Jaydex Licensed Contractor – please see our website for a list of Licensed Contractors in your area.

"Novabond is the proven workhorse of the waterproofing industry. Once it goes down, you know there won't be any issues with it. If you want total peace of mind, then Novabond is the ideal solution for your project."

Bob Wilson, Managing Director, Jaydex International.

Novabond - New Zealand's preferred waterproofing solution



LANGHAM HOTEL (FORMERLY SHERATON)



NORTH SHORE HYUNDAI



PAK'N SAVE WANGANUI



STIFFE HOOKER AND ASSOCIATES

Compliance

Novabond is a specialist design-and-build solution and therefore is not eligible for formal market appraisal (e.g. BRANZ, Beal). Novabond is, however, widely recognised as the market leader for the waterproofing of vehicle decks / bridge decks.

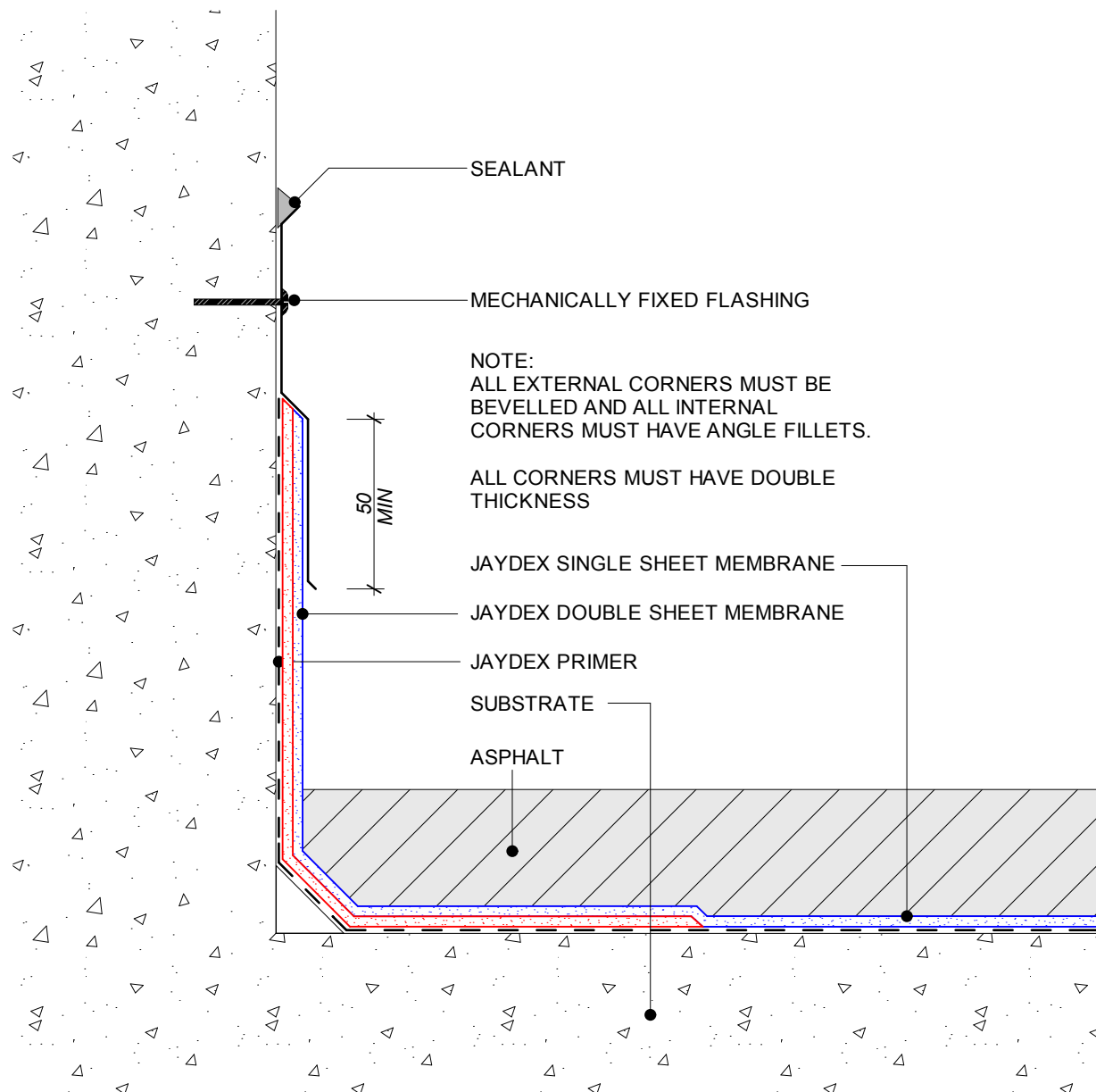


Warranty

Novabond membrane system has been tested to international standards and is warranted for 20 years.

Novabond must be installed by a Jaydex Licenced Contractor to the supplier's specification.



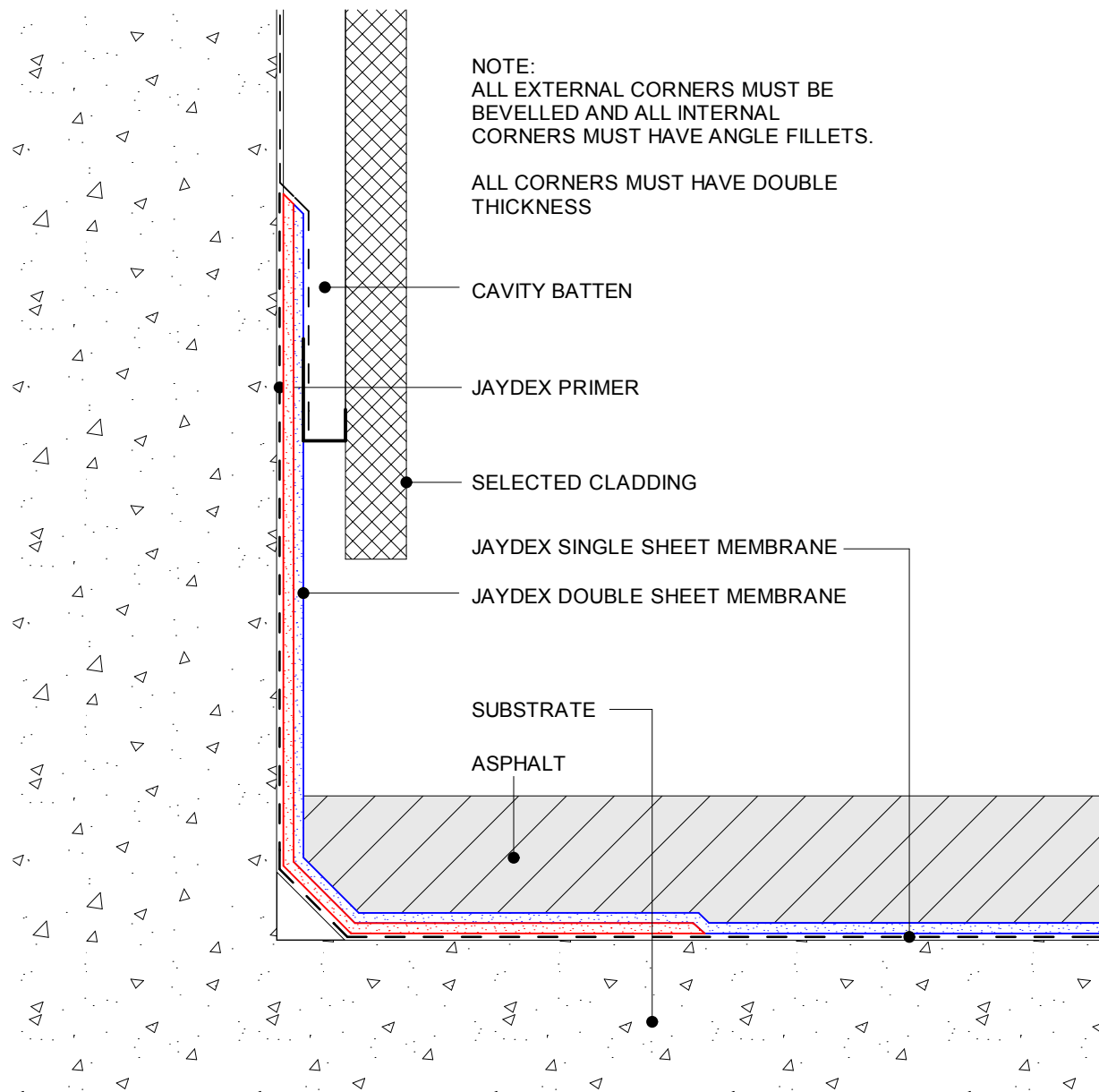


JAYDEX 
INTERNATIONAL · LIMITED

UNIT 3C-3 MARKEN PLACE,
GLENFIELD, AUCKLAND
PO BOX 100 000
NORTH SHORE MAIL CENTRE
PHONE: 444 1751 FAX: 444 0132
EMAIL: sales@jaydex.co.nz

APPLICATION	VEHICLE DECK SOLUTION	FINISH	ASPHALTIC CONCRETE OVERLAY FINISH
SYSTEM	SINGLE SHEET TORCH-ON MEMBRANE SYSTEM		
DRAWING NAME	EXPOSED WALL TRANSITION DETAIL GUIDE		
SCALE	NTS (A4 SHEET)	DISCLAIMER	THE DETAILED DRAWINGS AS OUTLINED ARE BASED ON EXPERIENCE AND APPLICATION PROCEDURES AND REPRESENT THE LATEST INFORMATION AVAILABLE. NO RESPONSIBILITY IS TAKEN FOR USES TO WHICH THIS INFORMATION MAY BE PUT, BUT WE ADVISE WHERE THIS APPLICATION IS IN COMPLETE CONFORMITY WITH THE APPROPRIATE SPECIFICATION A WARRANTY MAY BE AVAILABLE.
DATE	MAY 2015	WE RESERVE THE RIGHT TO ALTER OR UPDATE THE INFORMATION AT ANY TIME WITHOUT PRIOR NOTICE.	
REVISION		COPYRIGHT ©	

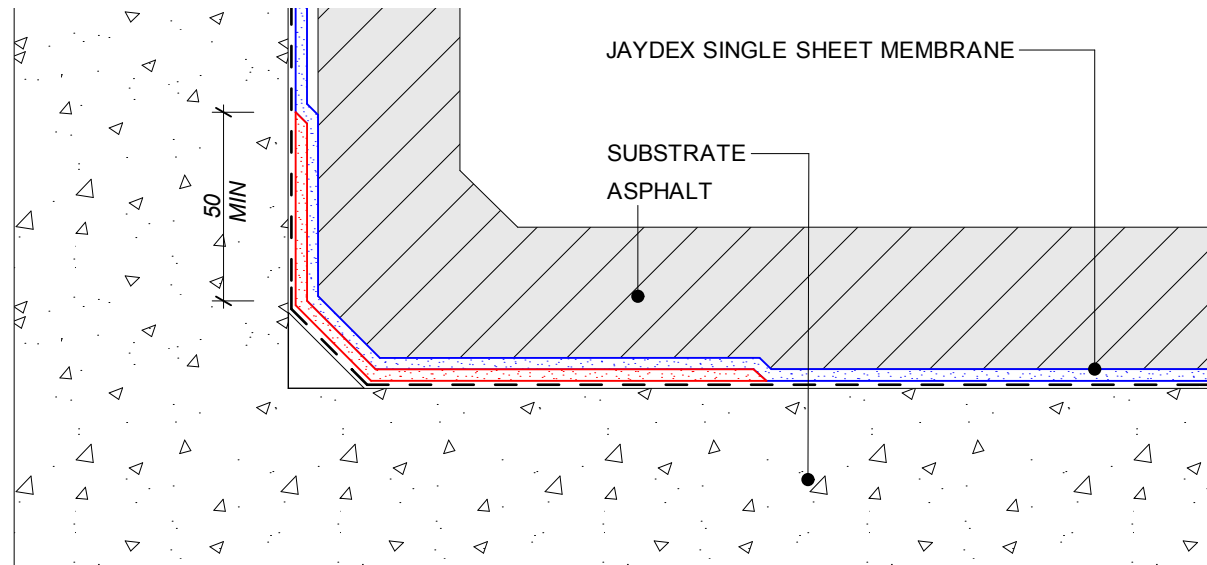
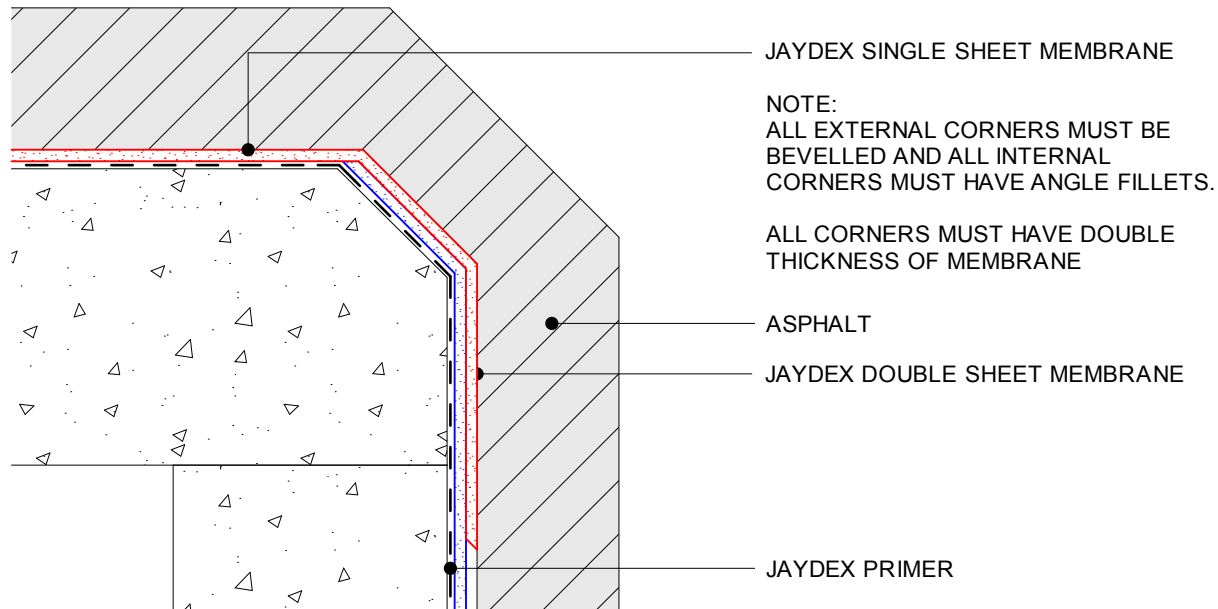
VD01



JAYDEX 
INTERNATIONAL · LIMITED

UNIT 3C-3 MARKEN PLACE,
GLENFIELD, AUCKLAND
PO BOX 100 000
NORTH SHORE MAIL CENTRE
PHONE: 444 1751 FAX: 444 0132
EMAIL: sales@jaydex.co.nz

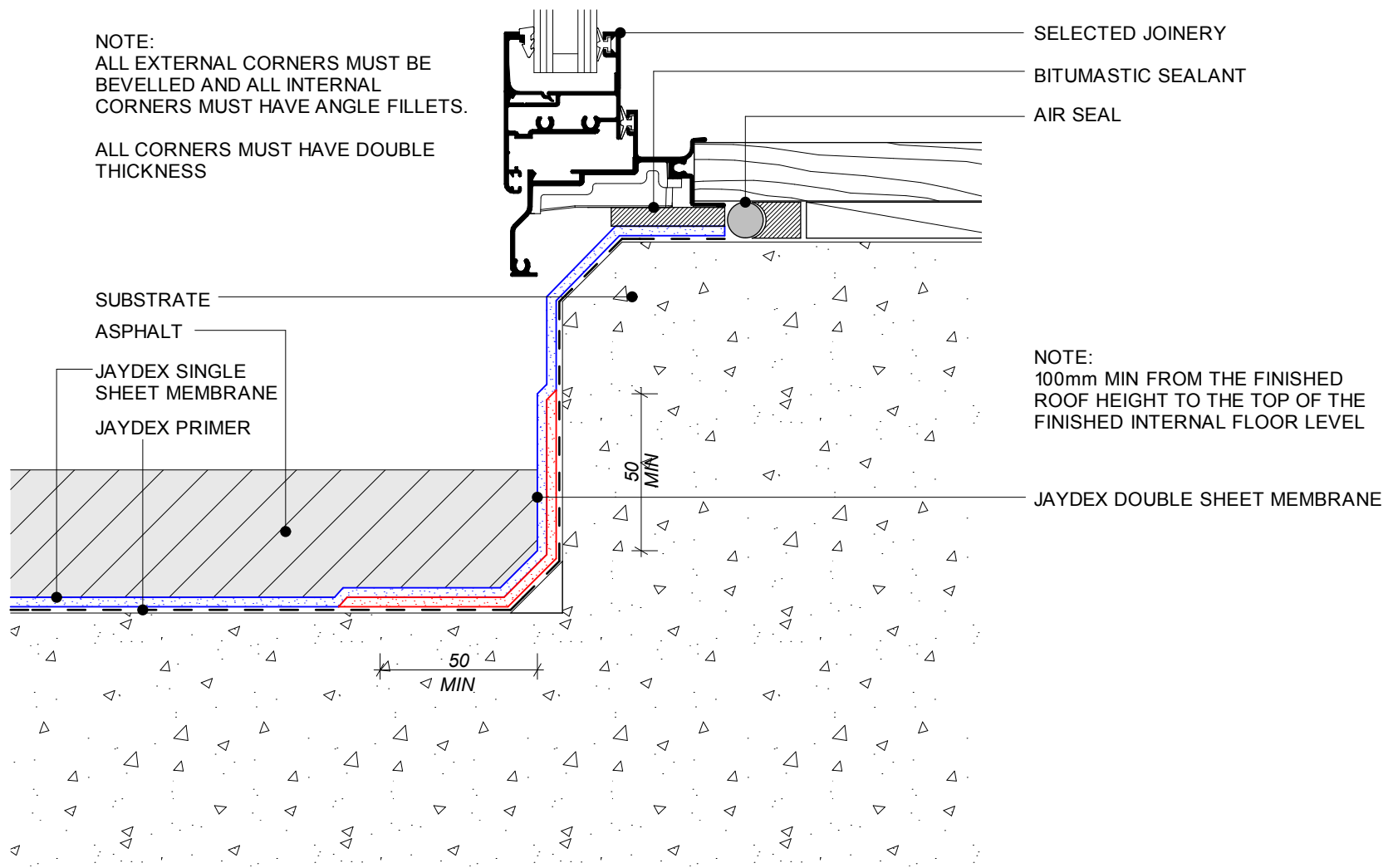
APPLICATION	VEHICLE DECK SOLUTION	FINISH	ASPHALTIC CONCRETE OVERLAY FINISH
SYSTEM	SINGLE SHEET TORCH-ON MEMBRANE SYSTEM		
DRAWING NAME	CAVITY WALL TRANSITION DETAIL GUIDE		
SCALE	NTS (A4 SHEET)	DESIGNED BY	VD02
DATE	MAY 2015	<small> THE DETAILED DRAWINGS AS OUTLINED ARE BASED ON EXPERIENCE AND APPLICATION PROCEDURES AND REPRESENT THE LATEST INFORMATION AVAILABLE. NO RESPONSIBILITY IS TAKEN FOR USES TO WHICH THIS INFORMATION MAY BE PUT, BUT WE ADVISE WHERE TH APPLICATION IS IN COMPLETE CONFORMITY WITH THE APPROPRIATE SPECIFICATION A WARRANTY MAY BE AVAILABLE. WE RESERVE THE RIGHT TO ALTER OR UPDATE THE INFORMATION AT ANY TIME WITHOUT PRIOR NOTICE. </small>	
REVISION			



JAYDEX 
INTERNATIONAL · LIMITED

UNIT 3C-3 MARKEN PLACE,
GLENFIELD, AUCKLAND
PO BOX 100 000
NORTH SHORE MAIL CENTRE
PHONE: 444 1751 FAX: 444 0132
EMAIL: sales@jaydex.co.nz

APPLICATION	VEHICLE DECK SOLUTION		TYPED	ASPHALTIC CONCRETE OVERLAY FINISH	
SYSTEM	SINGLE SHEET TORCH-ON MEMBRANE SYSTEM				
DRAWING NAME	LEVEL CHANGE TRANSITION DETAIL GUIDE				
SCALE	NTS (A4 SHEET)		APPROVED	THE DETAILED DRAWINGS AS OUTLINED ARE BASED ON EXPERIENCE AND APPLICATION PROCEDURES AND REPRESENT THE LATEST INFORMATION AVAILABLE. NO RESPONSIBILITY IS TAKEN FOR USES TO WHICH THIS INFORMATION MAY BE PUT, BUT WE ADVISE WHERE THIS APPLICATION IS IN COMPLETE CONFORMITY WITH THE APPROPRIATE SPECIFICATION A WARRANTY MAY BE AVAILABLE.	
DATE	MAY 2015		DESIGNED BY	VD03	
REVISION	WE RESERVE THE RIGHT TO ALTER OR UPDATE THE INFORMATION AT ANY TIME WITHOUT PRIOR NOTICE.				



JAYDEX 
INTERNATIONAL · LIMITED

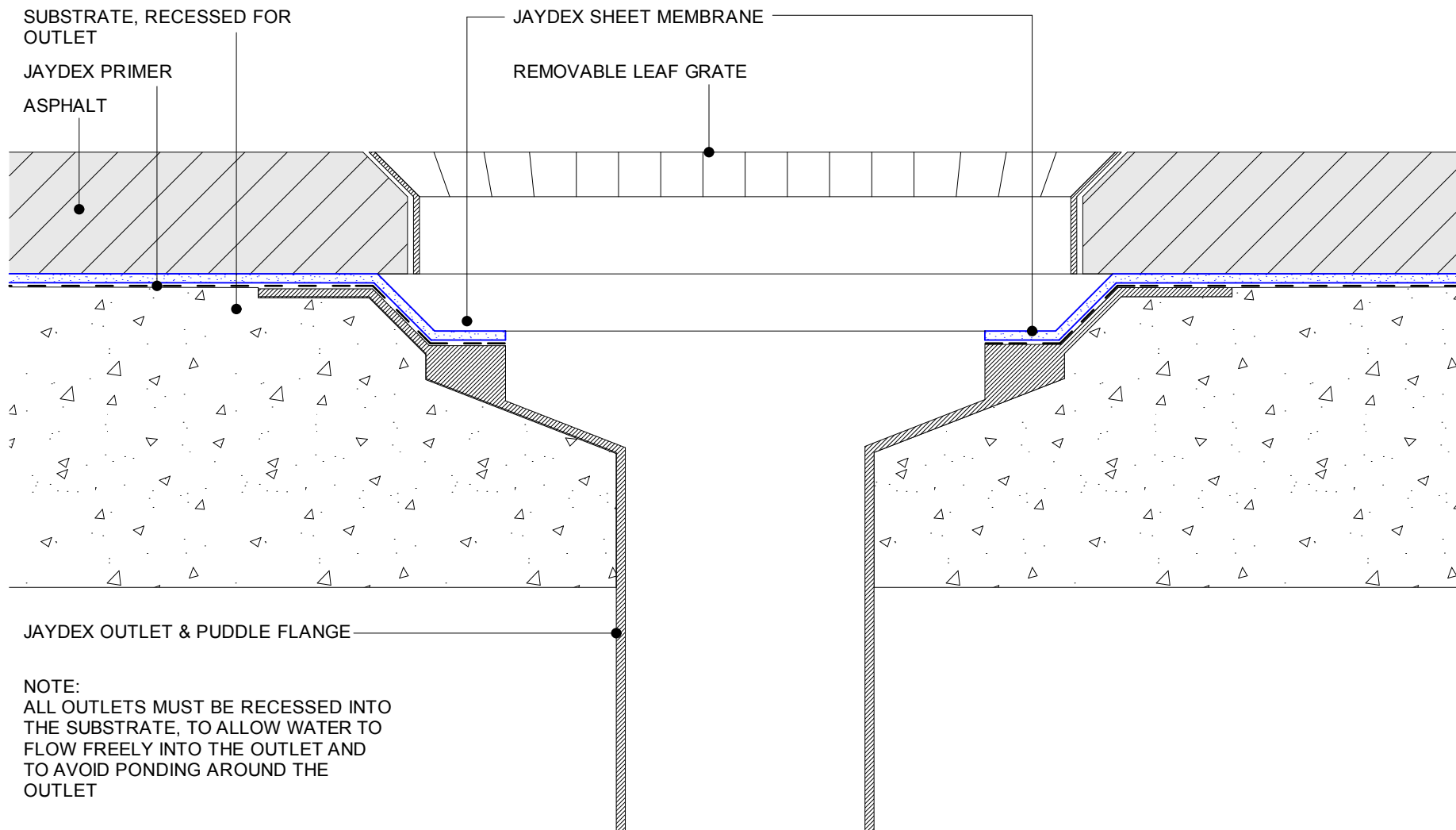
UNIT 3C-3 MARKEN PLACE,
GLENFIELD, AUCKLAND

PO BOX 100 000
NORTH SHORE MAIL CENTRE

PHONE: 444 1751 FAX: 444 0132
EMAIL: sales@jaydex.co.nz

APPLICATION	VEHICLE DECK SOLUTION	FINISH	ASPHALTIC CONCRETE OVERLAY FINISH
SYSTEM	SINGLE SHEET TORCH-ON MEMBRANE SYSTEM		
DRAWING NAME	DOOR SILL TRANSITION DETAIL GUIDE		
SCALE	NTS (A4 SHEET)	APPROVALS	THE DETAILED DRAWINGS AS OUTLINED ARE BASED ON EXPERIENCE AND APPLICATION PROCEDURES AND REPRESENT THE LATEST INFORMATION AVAILABLE. NO RESPONSIBILITY IS TAKEN FOR USES TO WHICH THIS INFORMATION MAY BE PUT, BUT WE ADVISE WHERE TH APPLICATION IS IN COMPLETE CONFORMITY WITH THE APPROPRIATE SPECIFICATION A WARRANTY MAY BE AVAILABLE.
DATE	MAY 2015	DESIGNED BY	
REVISION		WE RESERVE THE RIGHT TO ALTER OR UPDATE THE INFORMATION AT ANY TIME WITHOUT PRIOR NOTICE.	
		COPYRIGHT ©	

VD04

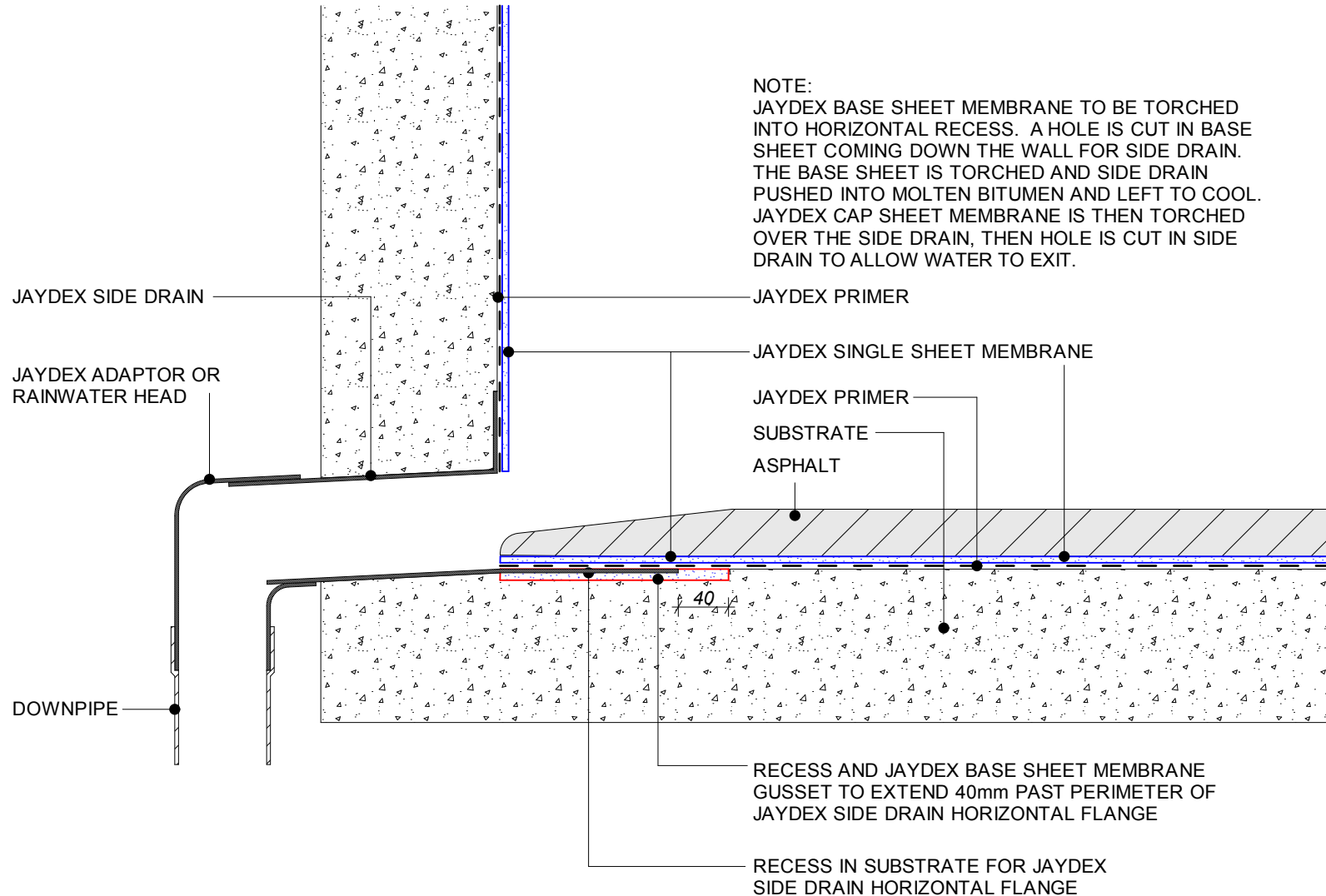


JAYDEX 
INTERNATIONAL · LIMITED®

UNIT 3C-3 MARKEN PLACE,
GLENFIELD, AUCKLAND
PO BOX 100 000
NORTH SHORE MAIL CENTRE

PHONE: 444 1751 FAX: 444 0132
EMAIL: sales@jaydex.co.nz

APPLICATION	VEHICLE DECK SOLUTION	FINISH	ASPHALTIC CONCRETE OVERLAY FINISH
SYSTEM	SINGLE SHEET TORCH-ON MEMBRANE SYSTEM		
DRAWING NAME	DECK DRAIN OUTLET DETAIL GUIDE		
SCALE	NTS (A4 SHEET)	DESIGNED BY	VD05
DATE	MAY 2015	APPROVED BY	
REVISION		<small>THE DETAILED DRAWINGS AS OUTLINED ARE BASED ON EXPERIENCE AND APPLICATION PROCEDURES AND REPRESENT THE LATEST INFORMATION AVAILABLE. NO RESPONSIBILITY IS TAKEN FOR USES TO WHICH THIS INFORMATION MAY BE PUT, BUT WE ADVISE WHERE THIS APPLICATION IS IN COMPLETE CONFORMITY WITH THE APPROPRIATE SPECIFICATION A WARRANTY MAY BE AVAILABLE.</small> <small>WE RESERVE THE RIGHT TO ALTER OR UPDATE THE INFORMATION AT ANY TIME WITHOUT PRIOR NOTICE.</small> <small>COPYRIGHT ©</small>	



JAYDEX 
INTERNATIONAL · LIMITED

UNIT 3C-3 MARKEN PLACE,
GLENFIELD, AUCKLAND
PO BOX 100 000
NORTH SHORE MAIL CENTRE
PHONE: 444 1751 FAX: 444 0132
EMAIL: sales@jaydex.co.nz

APPLICATION	VEHICLE DECK SOLUTION	FINISH	ASPHALTIC CONCRETE OVERLAY FINISH
SYSTEM	SINGLE SHEET TORCH-ON MEMBRANE SYSTEM		
DRAWING NAME	SIDE DRAIN OUTLET DETAIL GUIDE		
SCALE	NTS (A4 SHEET)	DATE	MAY 2015
REVISION	<small> THE DETAILED DRAWINGS AS OUTLINED ARE BASED ON EXPERIENCE AND APPLICATION PROCEDURES AND REPRESENT THE LATEST INFORMATION AVAILABLE. NO RESPONSIBILITY IS TAKEN FOR USES TO WHICH THIS INFORMATION MAY BE PUT, BUT WE ADVISE WHERE TH APPLICATION IS IN COMPLETE CONFORMITY WITH THE APPROPRIATE SPECIFICATION A WARRANTY MAY BE AVAILABLE. WE RESERVE THE RIGHT TO ALTER OR UPDATE THE INFORMATION AT ANY TIME WITHOUT PRIOR NOTICE. </small>		
DRAWING NO.	VD06		