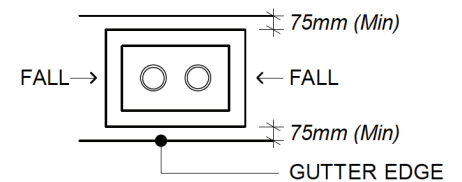
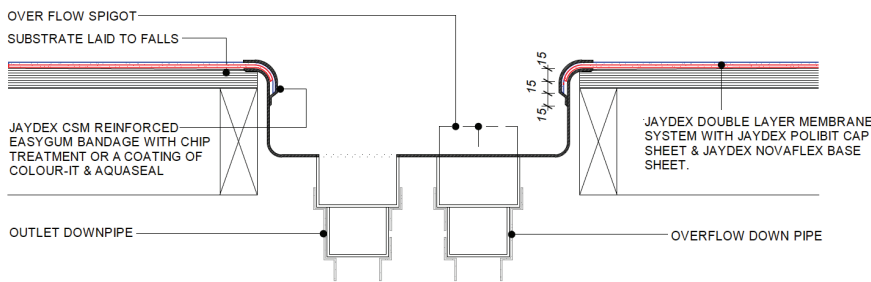


DUAL OVERFLOW 75/100

Allows for a primary drain and overflow in one unit.

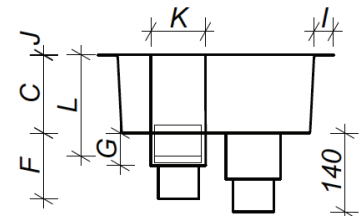
NOTES:

- * Flange is mechanically fixed into substrate recess.
- * Jaydex reinforced Easy-Gum Bandage to encapsulate end of Jaydex Polibit Membrane on all the inside walls of the overflow unit as indicated.

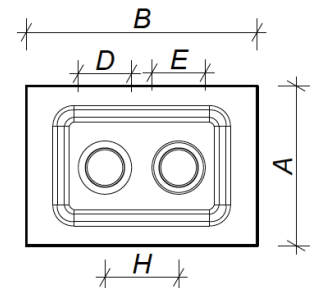


Internal Gutter Plan

	ITEM	5-000045
DIMENSIONS	DUAL	75/100
OVERALL WIDTH	A	290
OVERALL LENGTH	B	430
DEPTH	C	100
OVERFLOW O (OD)	D	75/100
MAIN OUTLET (O) OD	E	75/100
OUTLET PIPE LENGTH	F	130
OUTLET PIPE LENGTH	G	60
OUTLET POSITION	H	150
FLANGE WIDTH	I	30
FLANGE THICKNESS	J	4
OVERFLOW SPIGOT O	K	98
OVERFLOW SPIGOT O	L	165



Dual Overflow Elevation



Dual Overflow Plan