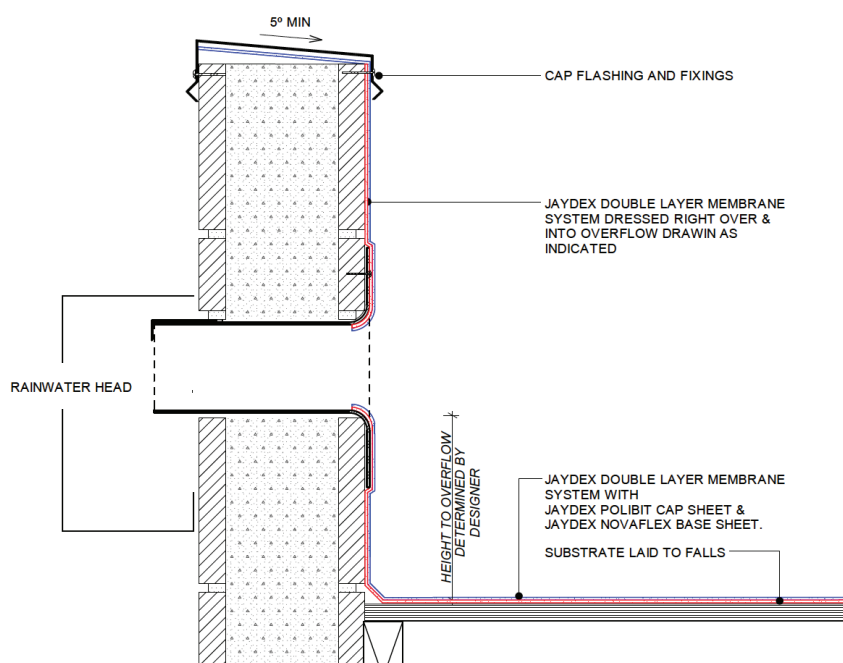
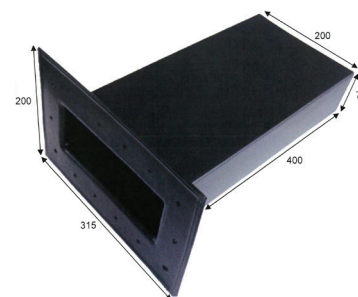


OVERFLOW 200X75MM

This overflow has been designed to E2/AS1 requirements.



Overflow 200x75mm



E2/AS1 Compliant Overflow

NOTES:

Z: Variable according to wind zoning

- * All internal transitions must have angle fillet
- * All external transitions must be bevelled
- * The membrane must extend across the top of the parapet.
- * The top of the parapet substrate must be angled to allow water to run off the top of the parapet
- * All fixings for the cap flashing, must be through the side of the flashing
- * Can combine Jaydex Overflow Drain with Jaydex Right Angle Adapter to suit

ITEM	5-000054
------	----------