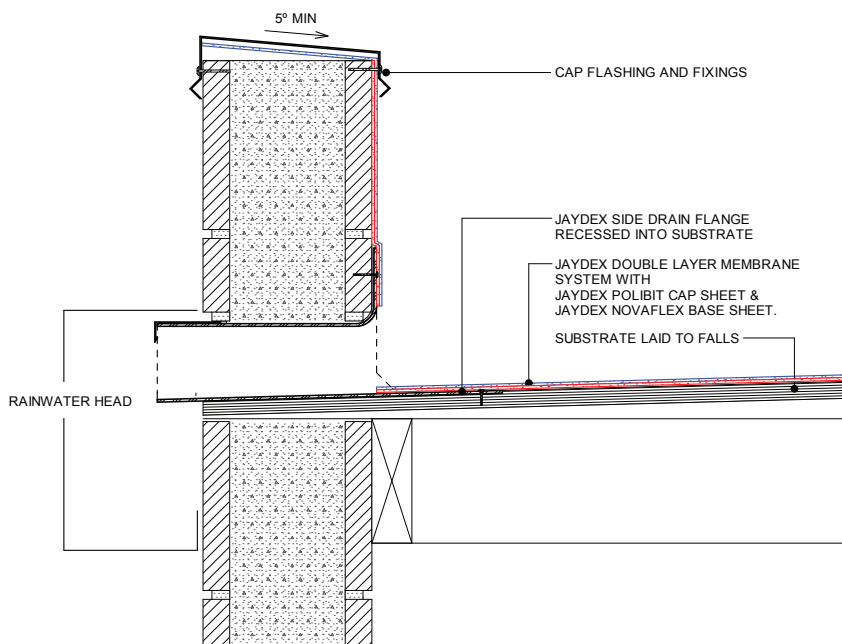
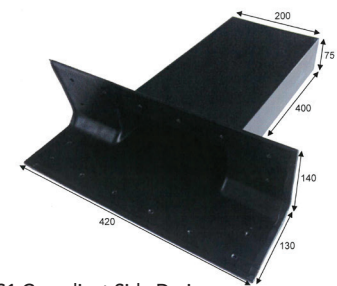


## SIDE DRAIN 200X75MM

This side drain has been designed to E2/AS1 requirements.



Side Drain



E2/AS1 Compliant Side Drain

### NOTES:

Z: Variable according to wind zoning

- \* All internal transitions must have angle fillet
- \* All external transitions must be bevelled
- \* The membrane must extend across the top of the parapet
- \* The top of the parapet substrate must be angled to allow water to run off the top of the parapet
- \* All fixings for the cap flashing, must be through the side of the flashing

ITEM	5-000063
------	----------