

# SQUARE SIDE DRAIN



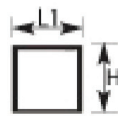
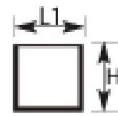
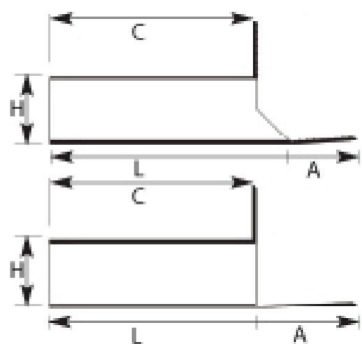
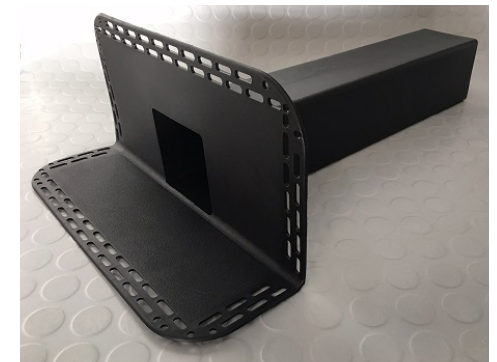
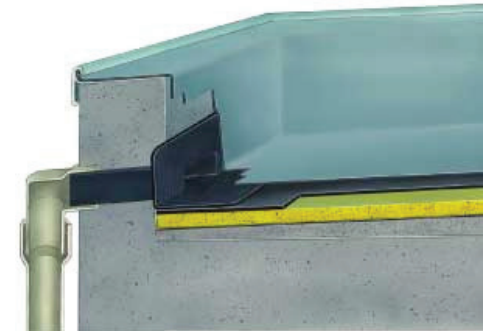
## Strong Light Square Horizontal Side Drain (outlet) units for Roofs and Decks

Typically used as a main storm water discharge unit from gutters, decks and roofs through parapets. Flanges and stems can be easily trimmed to accommodate site restrictions where necessary.

ITEM	5-000053	5-000062
ART.	39	39.2
A	100	100
B	180	180
C	300	425
H	100	100
L1	100	100
L	345	500

Art. 39 (in stock)

Art. 39.2 (indent order)



Art.44.1  
Leaf Grate



Art. 41  
Adaptor from 100 square to 100DP Ø

# SQUARE SIDE DRAIN - OUTLET DETAIL GUIDE

**NOTE 1**

Z: VARIABLE ACCORDING TO WIND ZONING.

- \* ALL INTERNAL TRANSITIONS MUST HAVE ANGLE FILLET.
- \* ALL EXTERNAL TRANSITIONS MUST BE BEVELLED.
- \* THE MEMBRANE MUST EXTEND ACROSS THE TOP OF THE PARAPET.
- \* THE TOP OF THE PARAPET SUBSTRATE, MUST BE ANGLED TO ALLOW WATER TO RUN OFF THE TOP OF THE PARAPET.
- \* ALL FIXINGS FOR THE CAP FLASHING, MUST BE THROUGH THE SIDE OF THE FLASHING.

**NOTE 2**

ROOF/ DECK SUBSTRATE AND WALL PARAPET CAN EITHER BE OF A WOODEN OR CONCRETE COMPOSITION.

