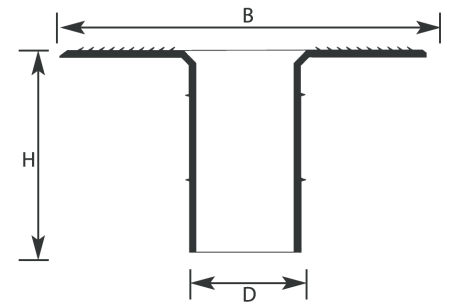
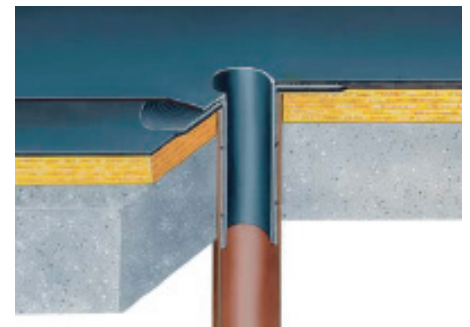


## ROOF DRAIN (DROPPER)

“UNIVERSAL” anti-backup roof drain is one of the best systems for connecting rainwater pipes and drains on flat roofs, gutters of multi-pitched roofs, and industrial buildings. It is particularly suitable for use with all kinds of APP or SBS modified bituminous membranes as well as liquid bitumen coatings.

IGOM has high resistance to UV rays, ozone and other atmospheric and chemical agents. It can be used in a wide temperature range as it is extremely flexible at low temperatures and stable over time thanks to its physical and mechanical properties, which therefore assure maximum performance throughout its lifespan.



ITEM	5-000083	5-000084	5-000085	5-000066	5-000087
ART.	150	1.1	13	10	14
DENOM.	50	60	75	80	90
B	245	245	300	310	320
H	250	250	250	250	250
D	42	54	66	73	83

ITEM	5-000067	5-000090	5-000090	5-000013	5-000002
ART.	11	16	12	17	112
DENOM.	100	110	125	140	160
B	325	335	350	360	380
H	250	250	250	250	250
D	92	100	116	132	148

Art. 10, 11, 317 in stock. All other items on indent.

### ACCESSORIES



Art. 24  
Leaf-grate and/or gravel-grate suitable for roof drains from mm. 60 Ø to mm. 160 Ø



Art. 26 (in stock)  
Suitable for roof drains from mm. 75 Ø to mm. 125 Ø



Art. 82  
Perforated ring to fit the gravel-grate from mm. 60 Ø to mm. 60 Ø