

# HORIZONTAL OVERFLOW

## Strong Light Rectangular Horizontal Overflow unit 200/75mm for Decks and Roofs

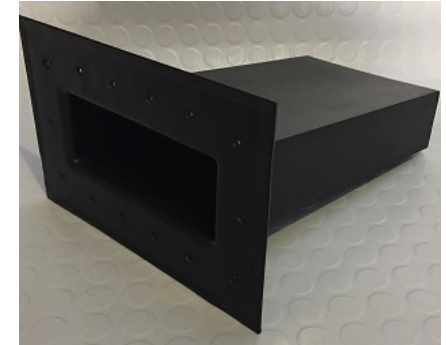
This overflow has been designed to E2/AS1 requirements and is used as a main overflow discharge unit through parapets in roof, deck and internal gutter situations.

ITEM	5-000054
------	----------

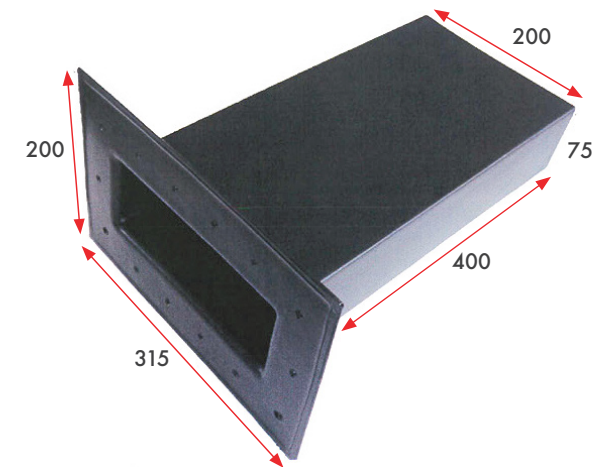
### NOTE

Z: Variable according to wind zoning

- All internal transitions must have angle fillet
- All external transitions must be bevelled
- The membrane must extend across the top of the parapet
- The top of the parapet substrate, must be angled to allow water to run off the top of the parapet
- All fixings for the cap flashing must be through the side of the flashing.



**E2/AS1**  
Compliant Side Drain



# HORIZONTAL OVERFLOW

