

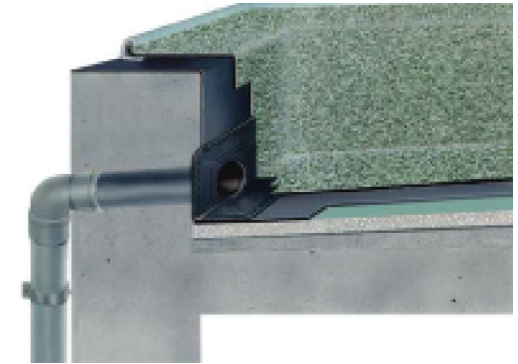
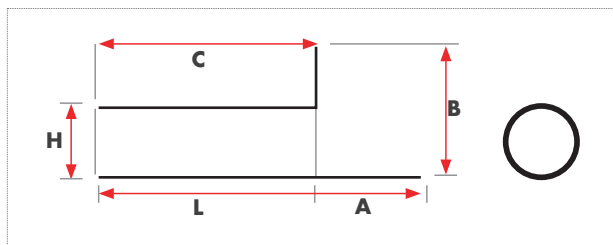
CIRCULAR SIDE DRAIN



Strong Light Circular Side Drain (outlet) units for Roofs and Decks

Typically used as a storm water discharge unit from gutters, decks and roofs through parapets. Flanges and stems can be easily trimmed to accommodate site restrictions where necessary.

ITEM	5-000016	5-000017	5-000018
ART.	304	307	310
A	120	120	120
B	170	170	170
C	500	500	500
H	63	80	100
L	500	500	500



Inlet Entrance
Leaf Guard



Art. 26 (in stock)
Suitable for roof
drains for mm. 75 Ø
to mm. 125 Ø



CIRCULAR SIDE DRAIN

NOTE 1

Z: VARIABLE ACCORDING TO WIND ZONING.

* ALL INTERNAL TRANSITIONS MUST HAVE ANGLE FILLET.

* ALL EXTERNAL TRANSITIONS MUST BE BEVELLED.

* THE MEMBRANE MUST EXTEND ACROSS THE TOP OF THE PARAPET.

* THE TOP OF THE PARAPET SUBSTRATE, MUST BE ANGLED TO ALLOW WATER TO RUN OFF THE TOP OF THE PARAPET.

* ALL FIXINGS FOR THE CAP FLASHING, MUST BE THROUGH THE SIDE OF THE FLASHING.

NOTE 2

ROOF/ DECK SUBSTRATE AND WALL PARAPET CAN EITHER BE OF A WOODEN OR CONCRETE COMPOSITION.

