

# SIDE DRAIN 200 x 75mm



## Strong Light Rectangular Side Drain 200x75mm (outlet) units for Roofs and Decks

This side drain has been designed to E2/AS1 requirements.

Typically used as a storm water discharge unit from gutters, decks and roofs through parapets.

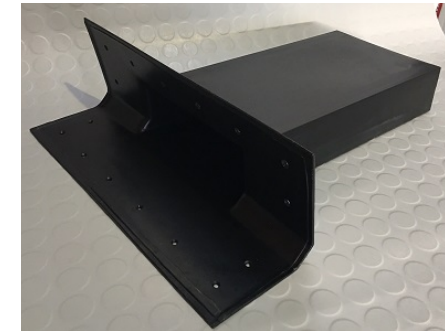
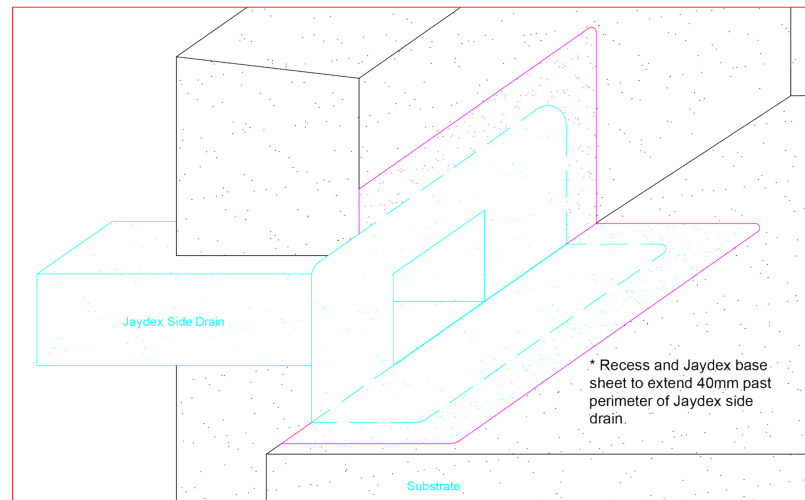
Flanges and stems can be easily trimmed to accommodate site restrictions where necessary.

ITEM	5-000063
------	----------

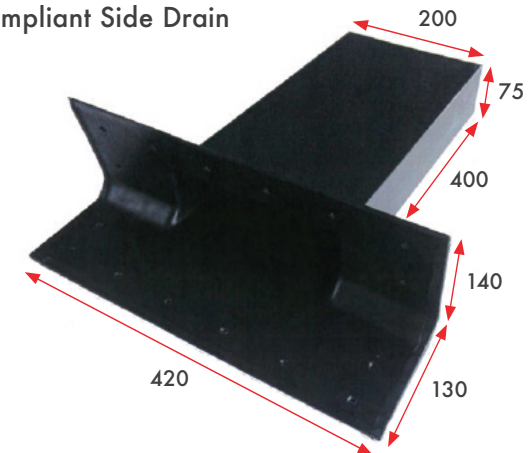
### NOTE

Z: Variable according to wind zoning

- All internal transitions must have angle fillet
- All external transitions must be bevelled
- The membrane must extend across the top of the parapet
- The top of the parapet substrate, must be angled to allow water to run off the top of the parapet
- All fixings for the cap flashing must be through the side of the flashing.



### E2/AS1 Compliant Side Drain



# SIDE DRAIN 200X75MM - OUTLET DETAIL GUIDE

## NOTE 1

Z: VARIABLE ACCORDING TO WIND ZONING.

\* ALL INTERNAL TRANSITIONS MUST HAVE ANGLE FILLET.

\* ALL EXTERNAL TRANSITIONS MUST BE BEVELLED.

\* THE MEMBRANE MUST EXTEND ACROSS THE TOP OF THE PARAPET.

\* THE TOP OF THE PARAPET SUBSTRATE, MUST BE ANGLED TO ALLOW WATER TO RUN OFF THE TOP OF THE PARAPET.

\* ALL FIXINGS FOR THE CAP FLASHING, MUST BE THROUGH THE SIDE OF THE FLASHING.

## NOTE 2

ROOF/ DECK SUBSTRATE AND WALL PARAPET CAN EITHER BE OF A WOODEN OR CONCRETE COMPOSITION.

