

STRONG LIGHT CIRCULAR PACKER

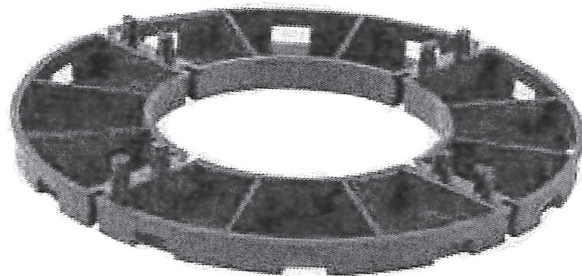


Supports for a deck finish over a Jaydex Membrane

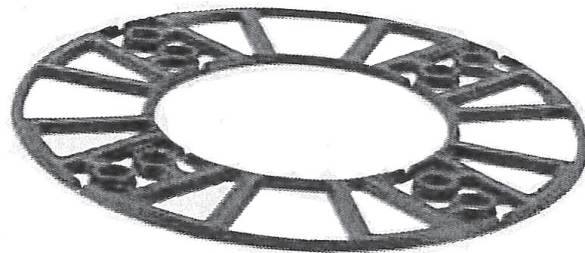
Can be utilised to elevate furred timber deck support joists above the Jaydex Membrane. It can also be utilised to elevate Heavy Tiles/Pavers as corner supports, above the Jaydex Membrane.

The standard height of the packer is 10mm with a 3mm packer for fine adjustment.

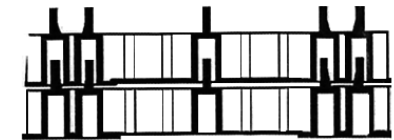
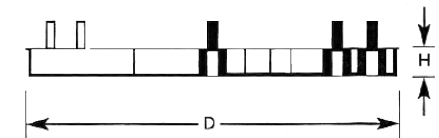
The Packers can be packed in 10mm multiples if required.



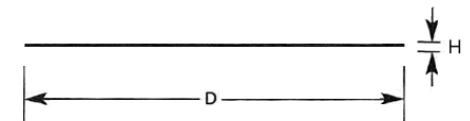
Can be neatly halved for deck corners and edges.



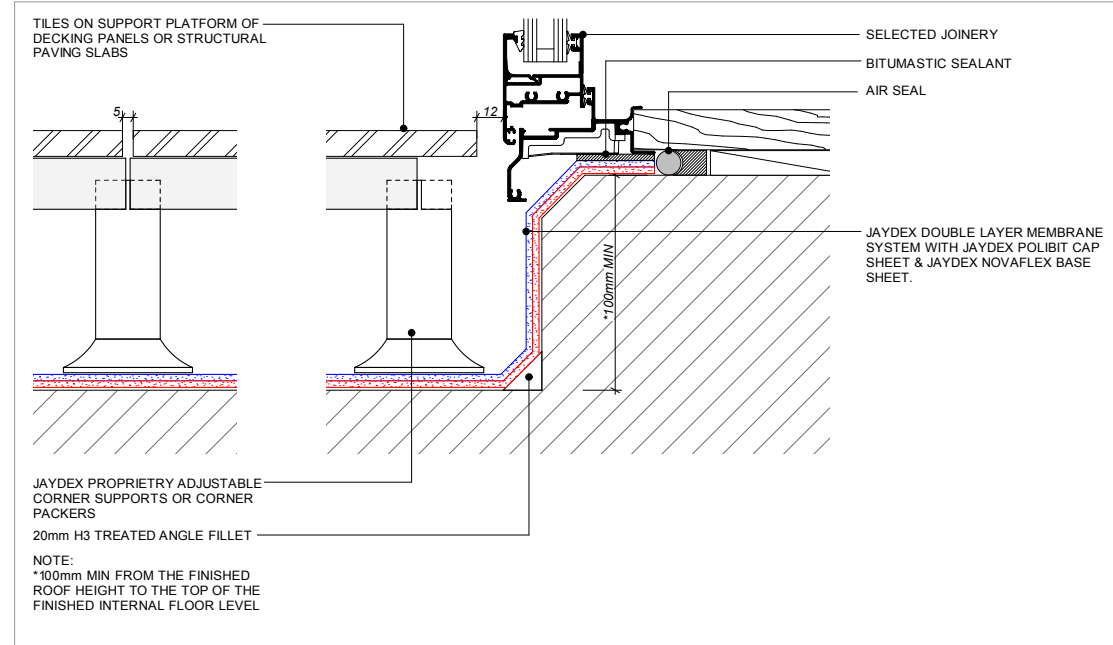
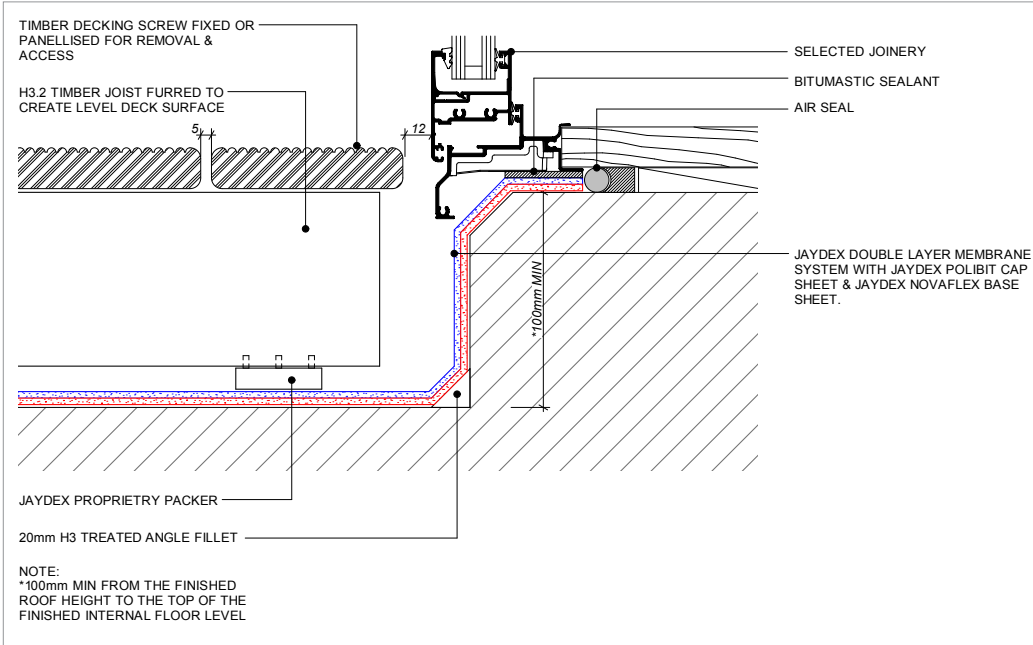
ART.	61
D	150
H	10



ART.	65
D	150
H	3



DOOR SILL TRANSITION DETAIL GUIDE



SIDE FIXING FOR BALUSTRADES DETAIL GUIDE

